

PENNSYLVANIA GAME COMMISSION

PROJECT NO. PGC-BLTZ-414-22-01

SGL-414 BELTZVILLE (ACOE) PROPERTY

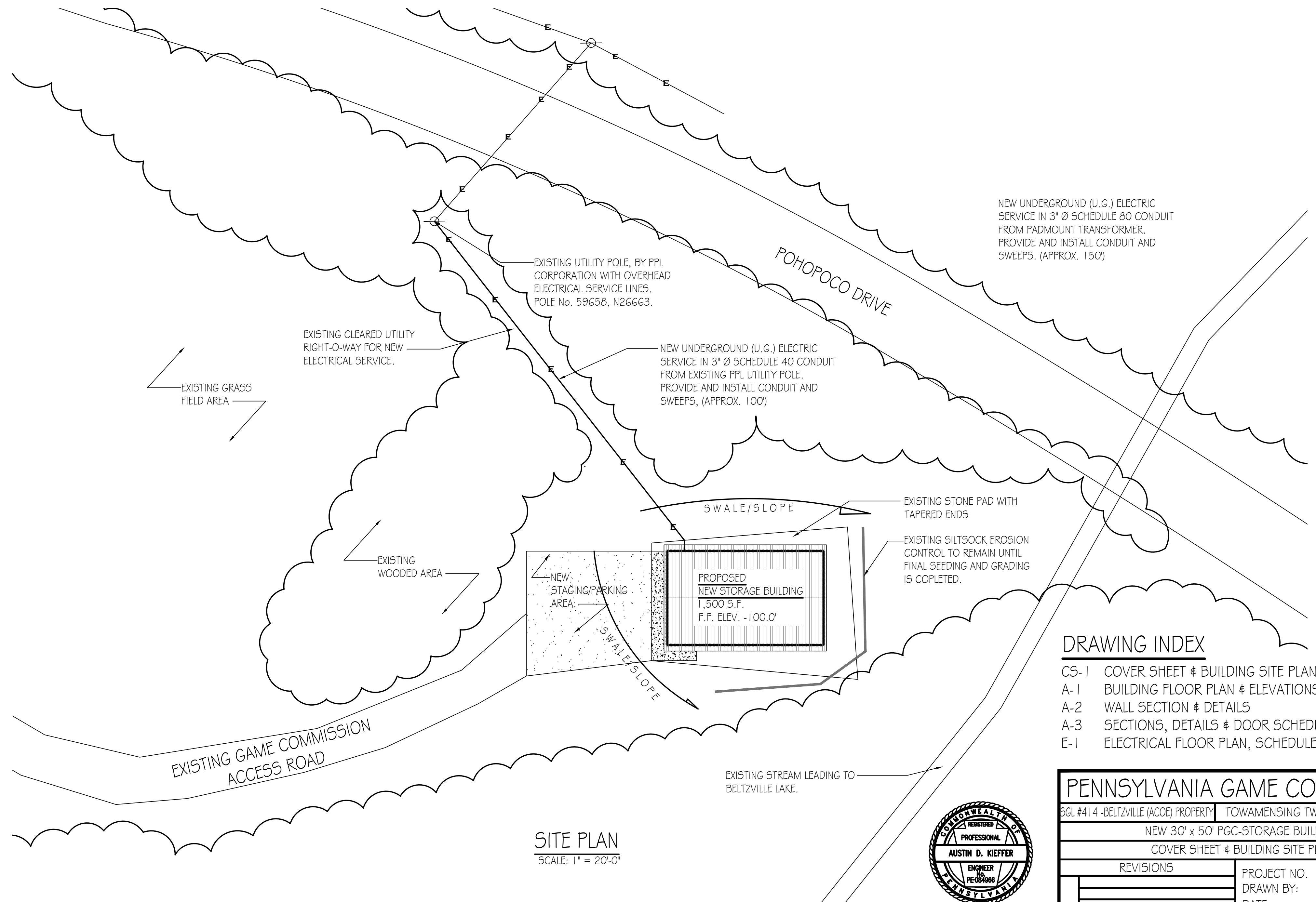
NEW 30' x 50' STORAGE BUILDING

TOWAMENSING TOWNSHIP, CARBON COUNTY, PENNSYLVANIA

CONTRACT NO. 1: GENERAL CONSTRUCTION
CONTRACT NO. 2: ELECTRICAL CONSTRUCTION

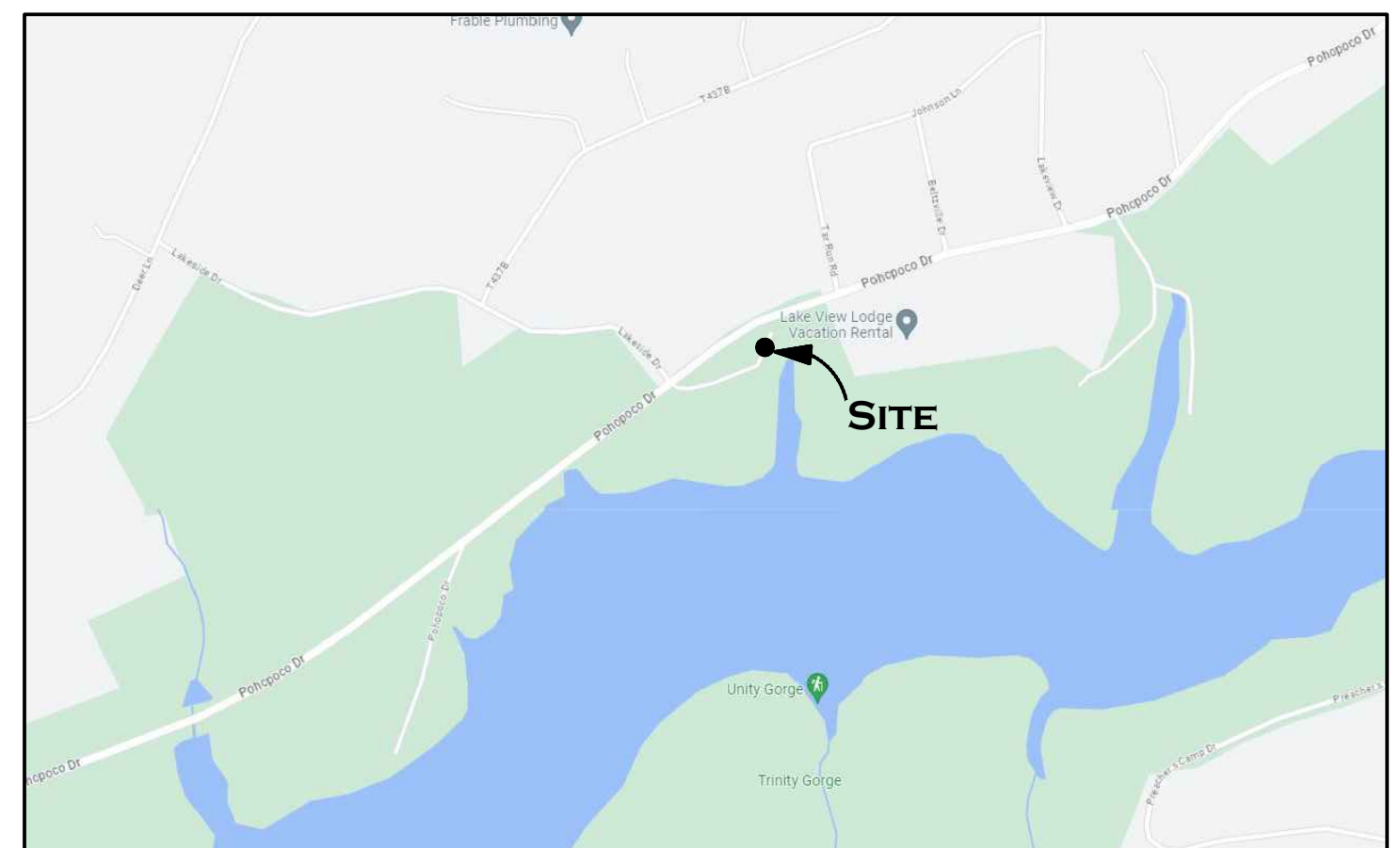
SITE PLAN GENERAL NOTES:

- UTILITY LINE LOCATIONS SHOWN ON THE DRAWINGS ARE APPROXIMATE. UNDERGROUND TELEPHONE, ELECTRIC, GAS, SANITARY SEWER, WATER AND STORMWATER DRAINAGE LINES MAY BE PRESENT AT SOME WORK LOCATIONS. FIELD VERIFICATION IS REQUIRED PRIOR TO ANY CONSTRUCTION. CONTACT PA ONE CALL AND COMPLY WITH ACT 287 (AS AMENDED) REGARDING LOCATIONS OF UNDERGROUND UTILITIES.
- ALL WORK WITHIN THE PUBLIC RIGHT-OF-WAY SHALL BE CONDUCTED IN ACCORDANCE WITH THE REQUIREMENTS OF PENNDOT, THE LOCAL MUNICIPALITY AND THE CONTRACT DOCUMENTS.
- CONTRACTOR SHALL COORDINATE WITH AFFECTED UTILITY COMPANIES IN THE EVENT ITEMS SUCH AS TEMPORARY POLE SUPPORT IS REQUIRED. THIS WORK SHALL BE COMPLETED AT NO ADDITIONAL COST TO THE OWNER.
- EXISTING DRAINAGE FACILITIES SHALL REMAIN INTACT DURING CONSTRUCTION, UNLESS OTHERWISE DIRECTED BY THE ENGINEER.
- ALL AREAS DISTURBED BY THE CONSTRUCTION WORK SHALL BE RESTORED IN ACCORDANCE WITH THE CONTRACT DOCUMENTS TO THEIR ORIGINAL CONDITION OR BETTER.
- ALL DISTURBED AREAS NOT RECEIVING OTHER SURFACE TREATMENT SHALL BE GRADED, SEEDED, AND MULCHED.
- CONTRACTOR SHALL REFER TO CONTRACT DOCUMENTS FOR SOIL EROSION & SEDIMENTATION CONTROL PLAN REQUIREMENTS.
- MAINTAIN ACCESS TO DRIVEWAYS AND ENTRANCES LOCATED ALONG THE PROJECT.
- THE CONTRACTOR SHALL ENSURE THAT ALL CONSTRUCTION VEHICLES (INCLUDING MATERIAL SUPPLIER VEHICLES) LEAVING THE PROJECT AREA HAVE MUD BUILDUP REMOVED FROM THE TIRES BEFORE EXITING ONTO PAVED ROADWAYS. ALL MUD TRACKED ONTO PAVED ROADWAYS SHALL BE IMMEDIATELY REMOVED FROM THE ROADWAY.



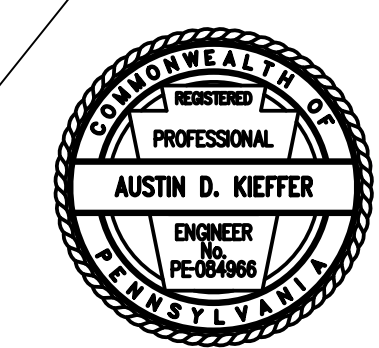
DRAWING INDEX

CS-1	COVER SHEET & BUILDING SITE PLAN
A-1	BUILDING FLOOR PLAN & ELEVATIONS
A-2	WALL SECTION & DETAILS
A-3	SECTIONS, DETAILS & DOOR SCHEDULE
E-1	ELECTRICAL FLOOR PLAN, SCHEDULES & DETAILS



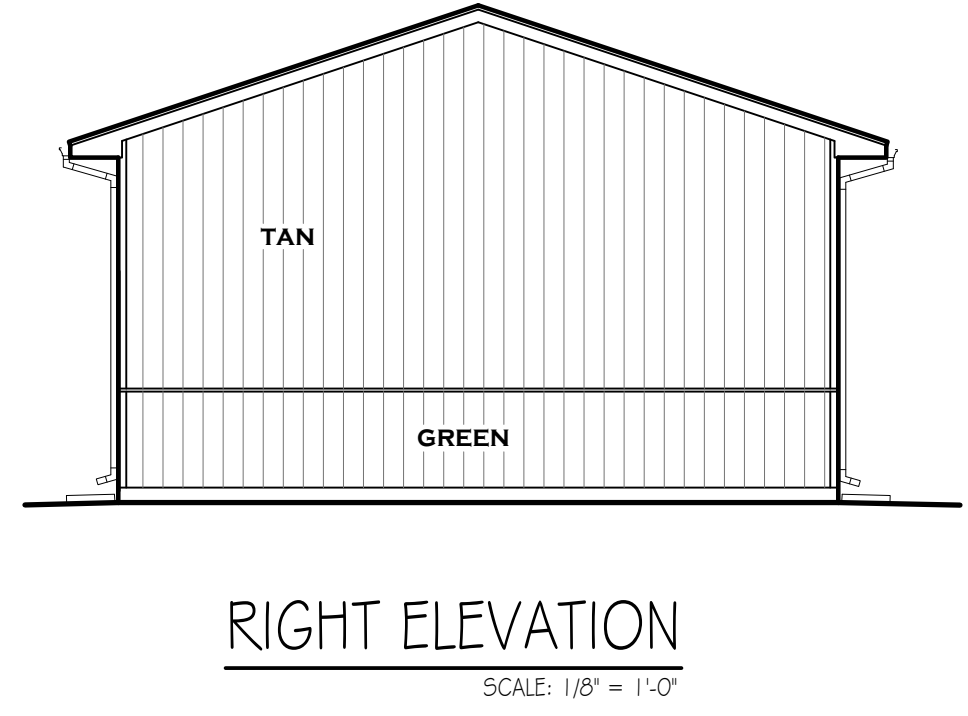
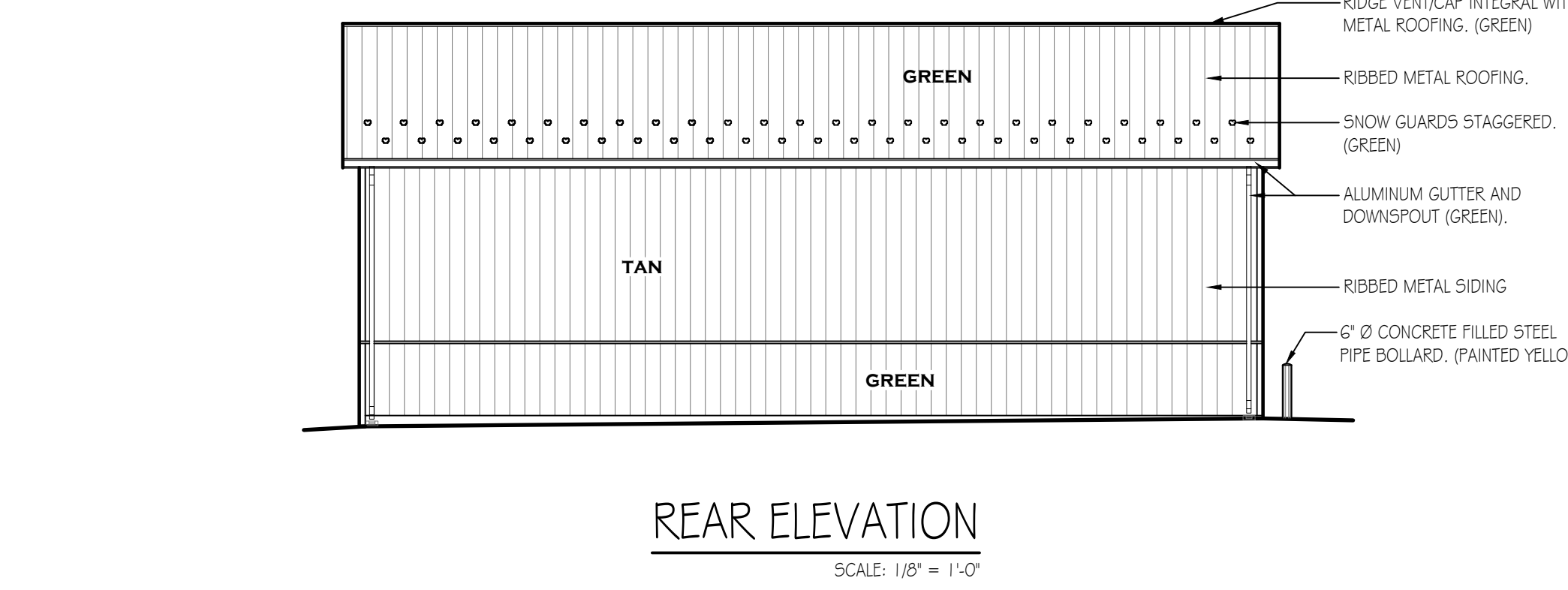
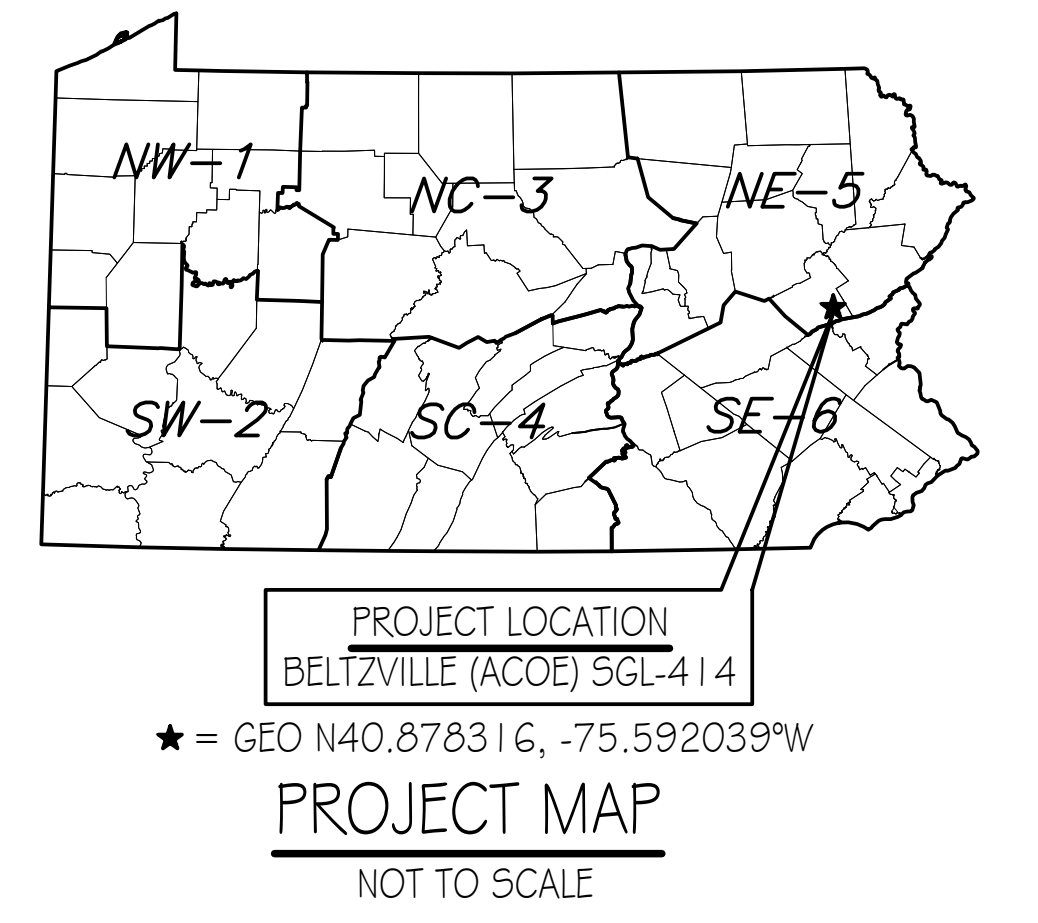
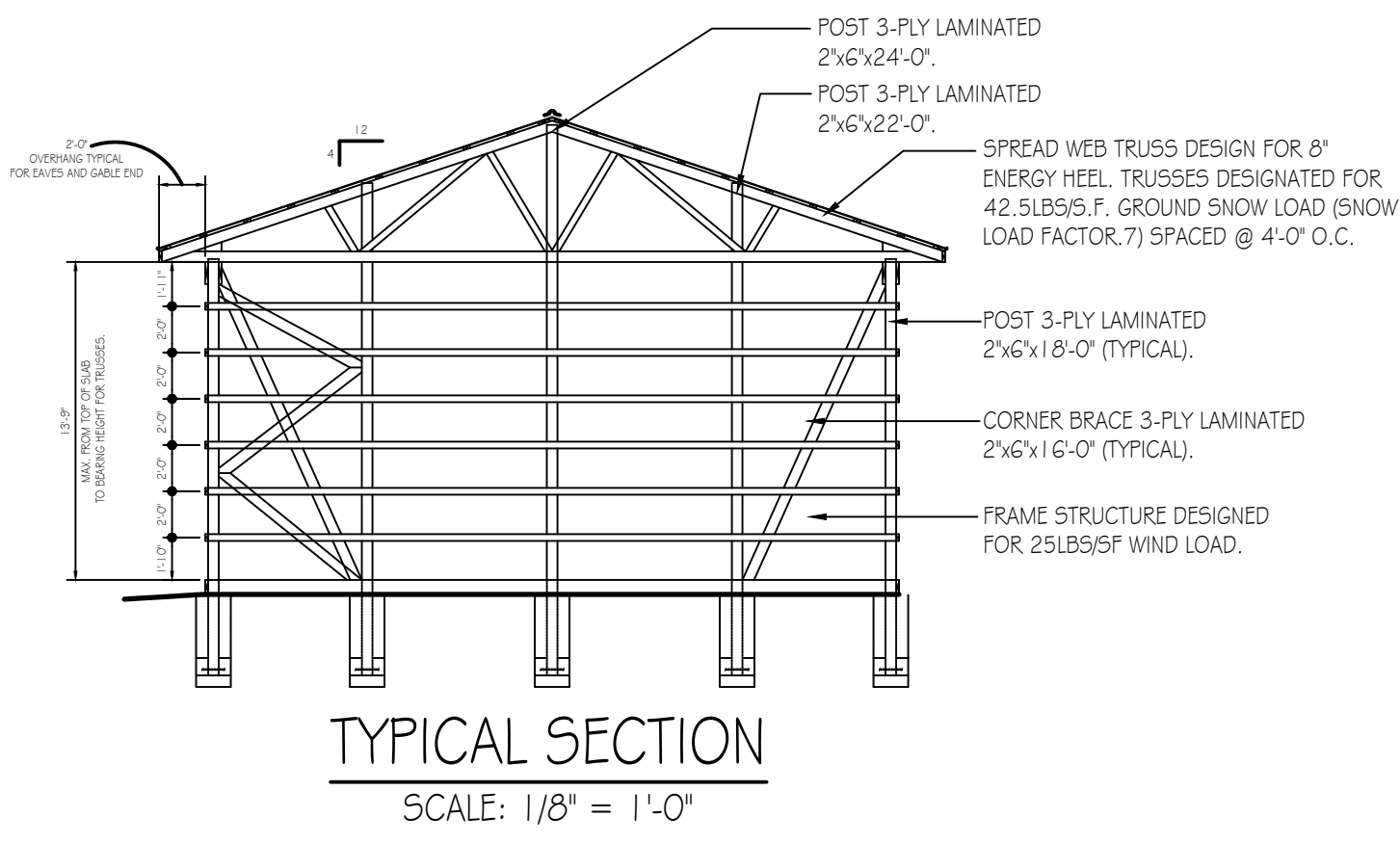
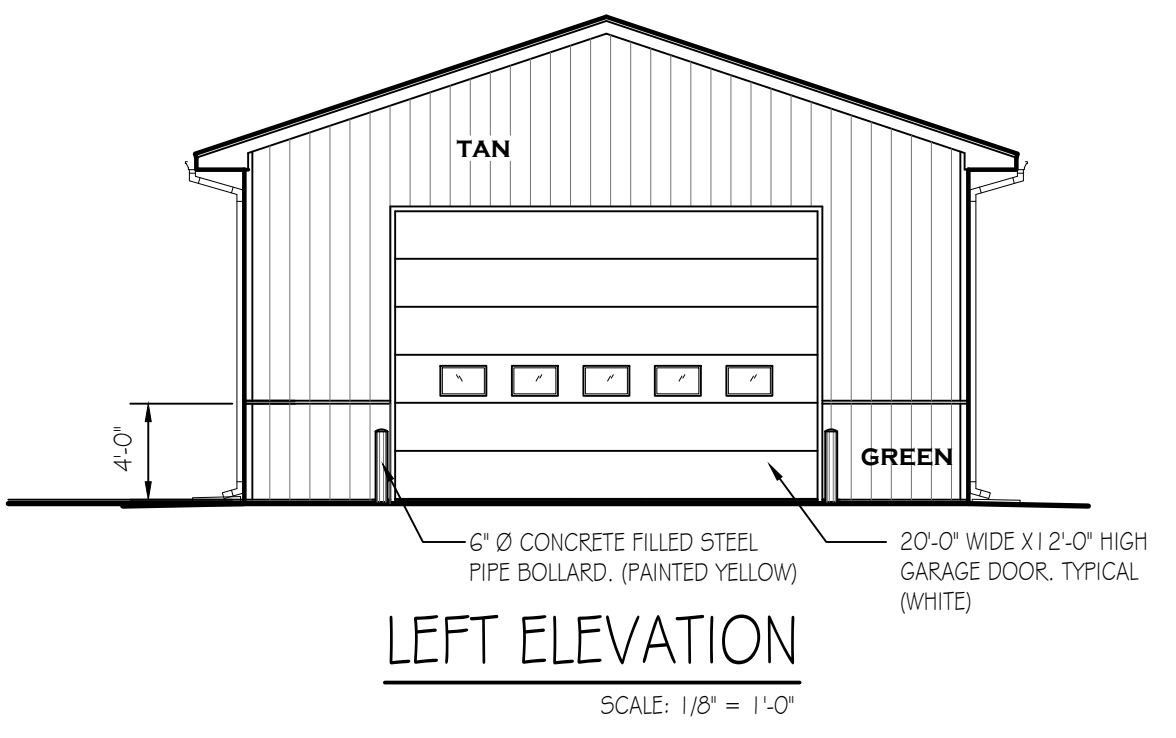
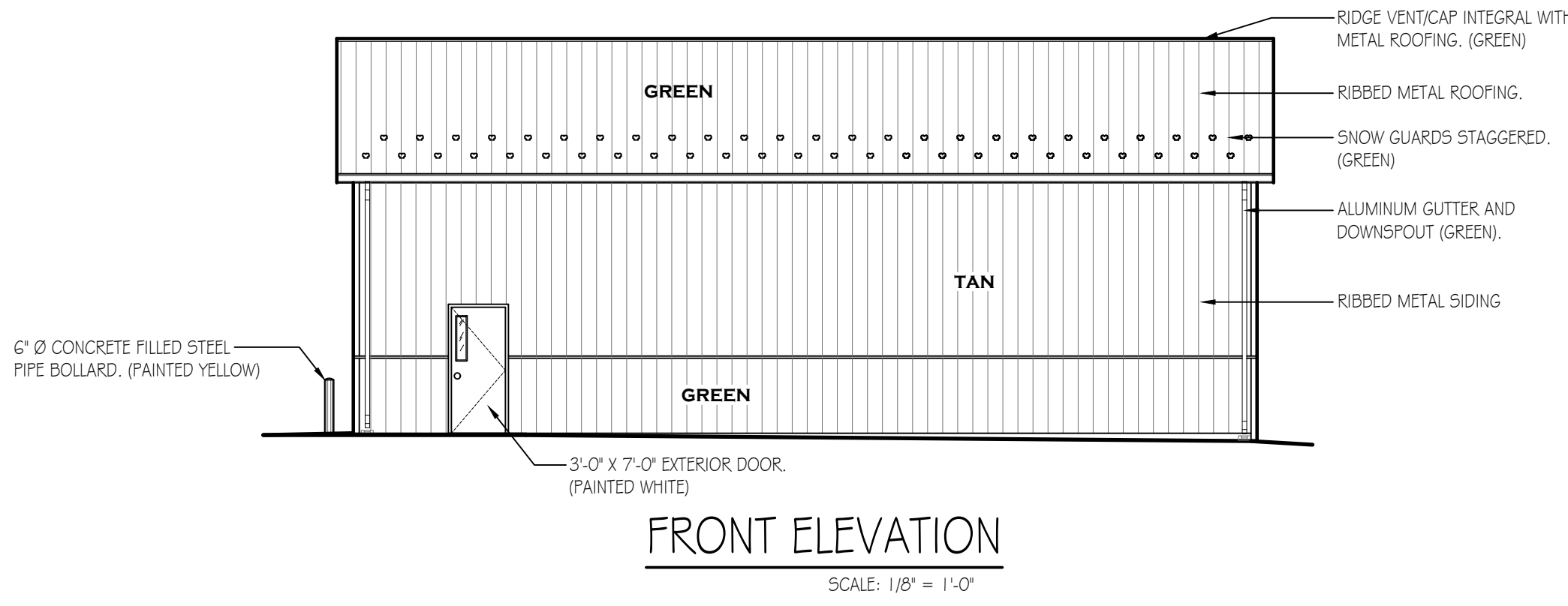
PROJECT VICINITY MAP
NOT TO SCALE

SITE PLAN
SCALE: 1" = 20'-0"

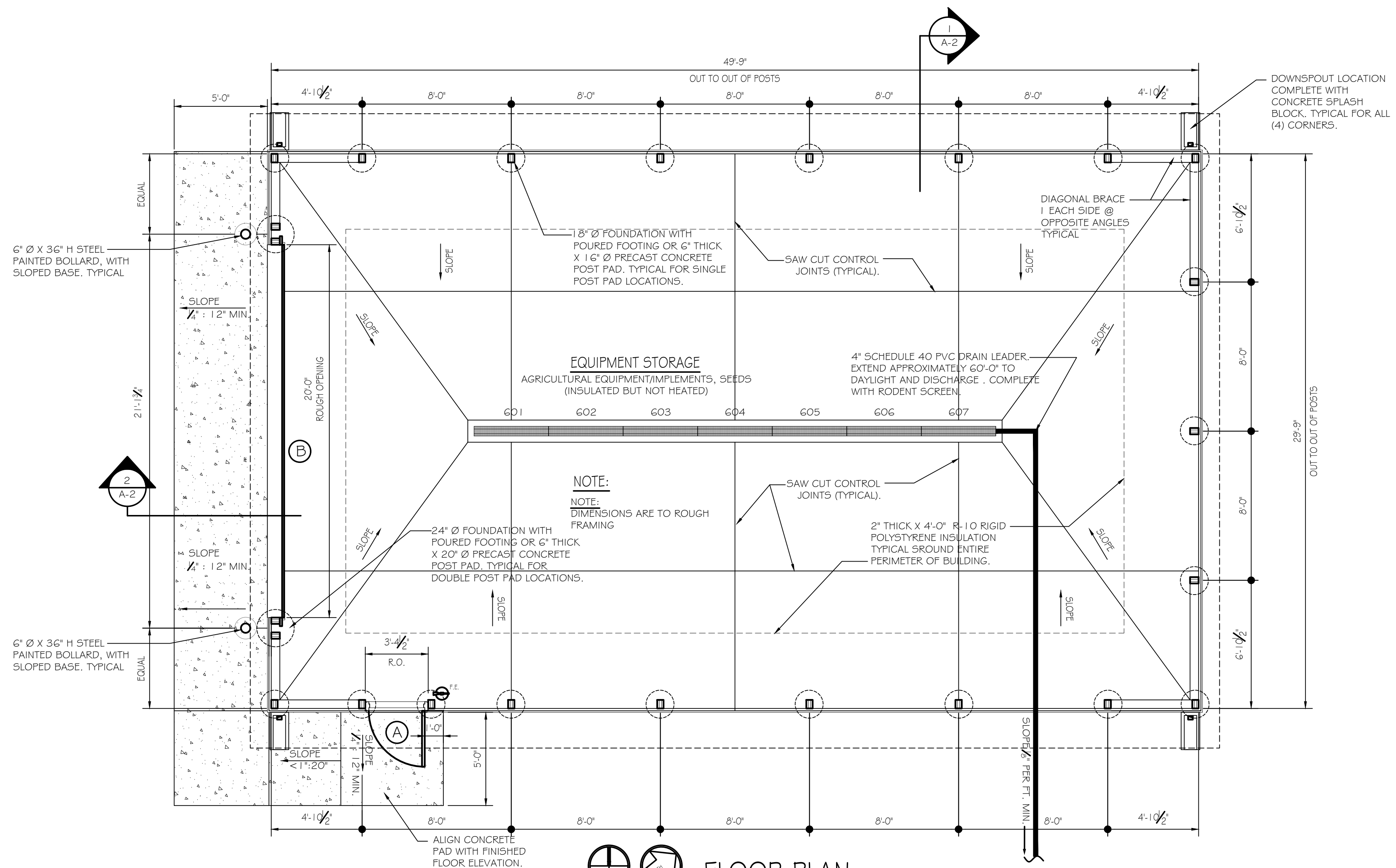
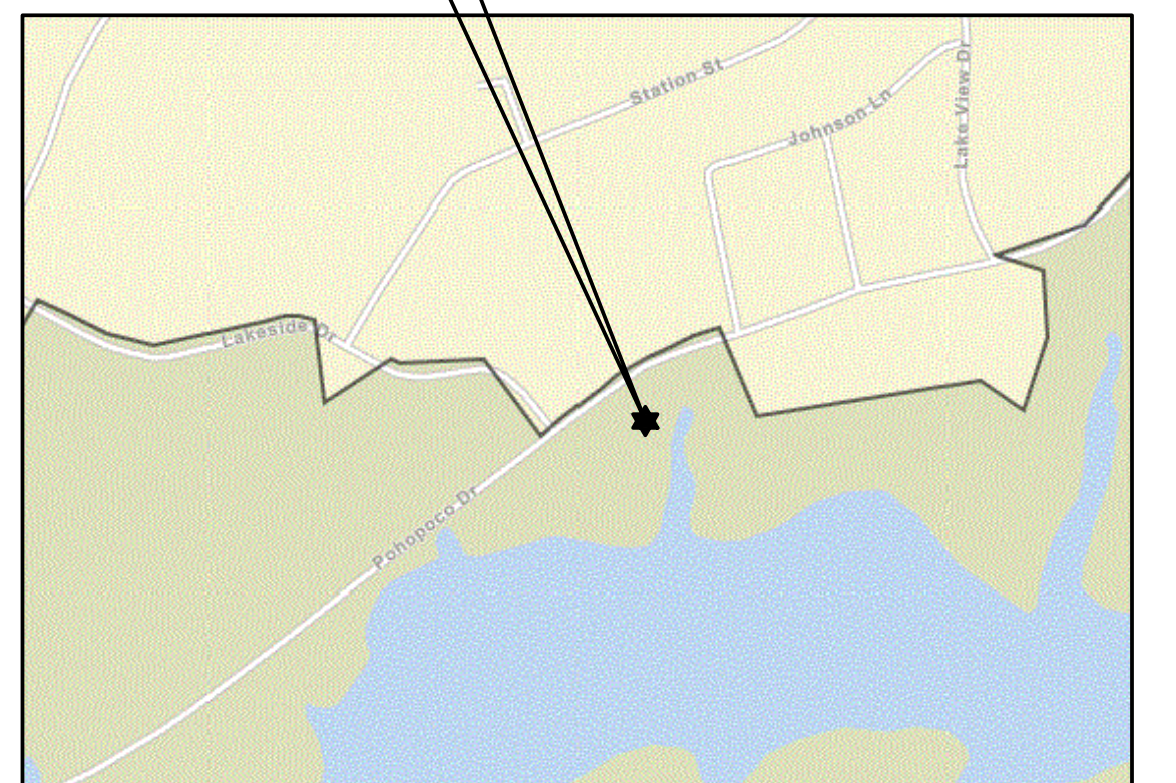


PENNSYLVANIA GAME COMMISSION		
SGL #414 -BELTZVILLE (ACOE) PROPERTY	TOWAMENSING TWP.	CARBON COUNTY
NEW 30' x 50' PGC-STORAGE BUILDING		
COVER SHEET & BUILDING SITE PLAN		
REVISIONS	PROJECT NO.	PGC-SGL-414-22-01
	DRAWN BY:	M. SPOTTS
	DATE:	11/27/2023
	SHEET NO.	CS-1





PROJECT LOCATION
BELTZVILLE (ACOE) SGL-414
2075 POHOPOCO DRIVE
LEHIGHTON, PA 18235
TOWAMENSING TOWNSHIP, CARBON COUNTY



BUILDING CODE SUMMARY

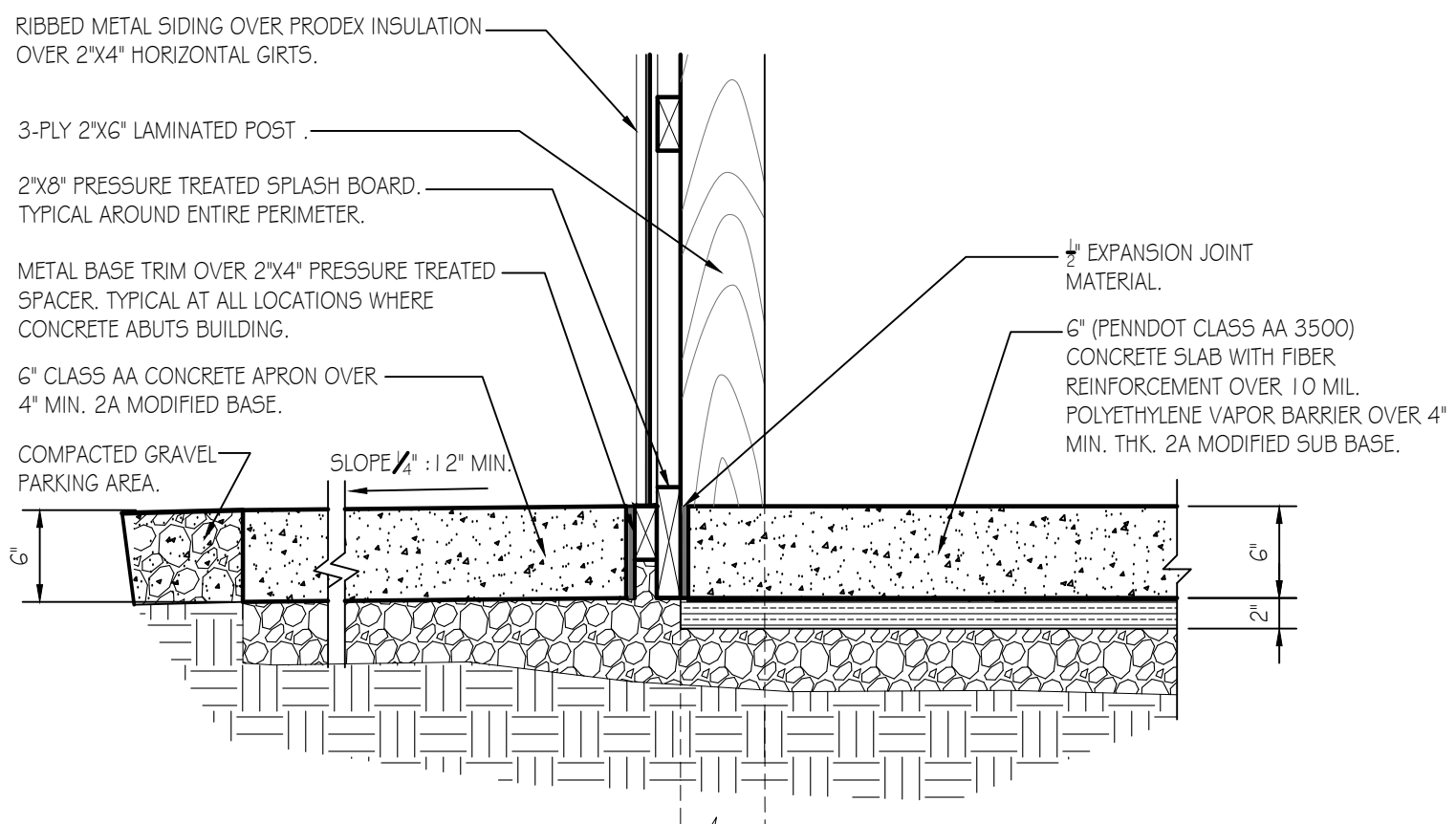
Code: International Building Code, 2018 edition

Scope: Construction of a new storage building on State Game Lands No. 414 in Towamensing Township, Carbon County. The new storage building will house vehicles, excavation equipment, implements and tools necessary for maintaining state game land grounds and roadways.

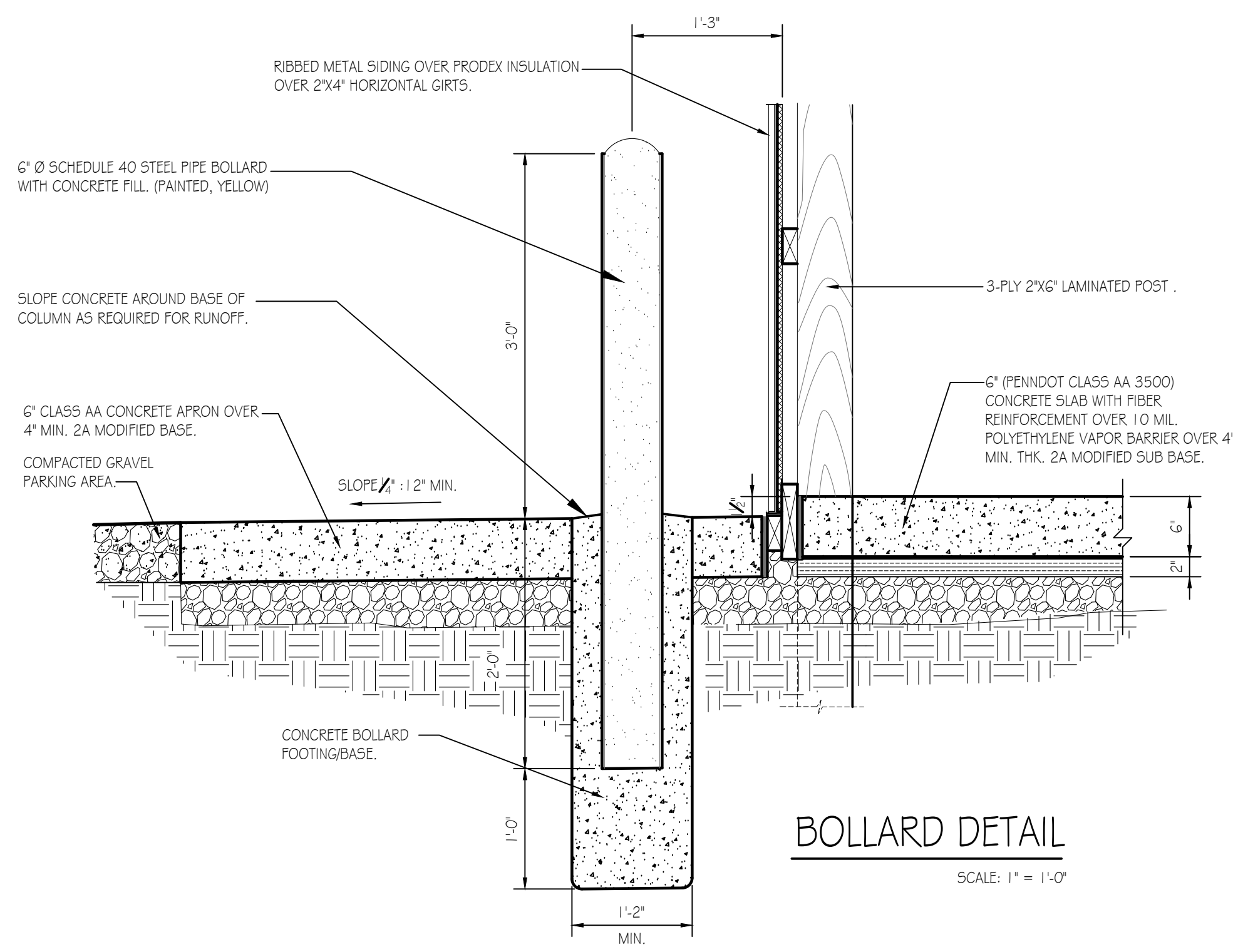
Summary:
Use & Occupancy Group: 3.11.2.5-1, Building used for Moderate-Hazard Storage
Construction Type: VB (Table 601)
New Building Area: 1,500s.f.
Allowable Area: 9,000 s.f. (Table 506.2)
Building Stories: 1 Story, No basement, Allowable Stories: 1 (504.4)
Fire Protection: No fire suppression, not required.
Fire Extinguishers: Units of "A" = 1,500 / 1,500 = 1 (Table 906.3(1)) Fire extinguisher shall be provided adjacent to entry door.
Occupant Load: Storage, Occupancy Factor = 300 gross
1,500 S.F./300 = 5 persons
Egress Width: 5 x 0.2 inches = 1.0 inches min. (1005.3.2).
Means Of Egress: 1 Exits provided = 36 inches; 1 required (1007.1.1 Table 1006.3.3(2)).
Accessibility: Not required, per building use and occupancy requesting exemption/variance from PA L&I, A.A.B.
Energy Efficiency: Building/structure will not be heated or airconditioned. Low-Energy Building. (IECC)(C402.1.1)



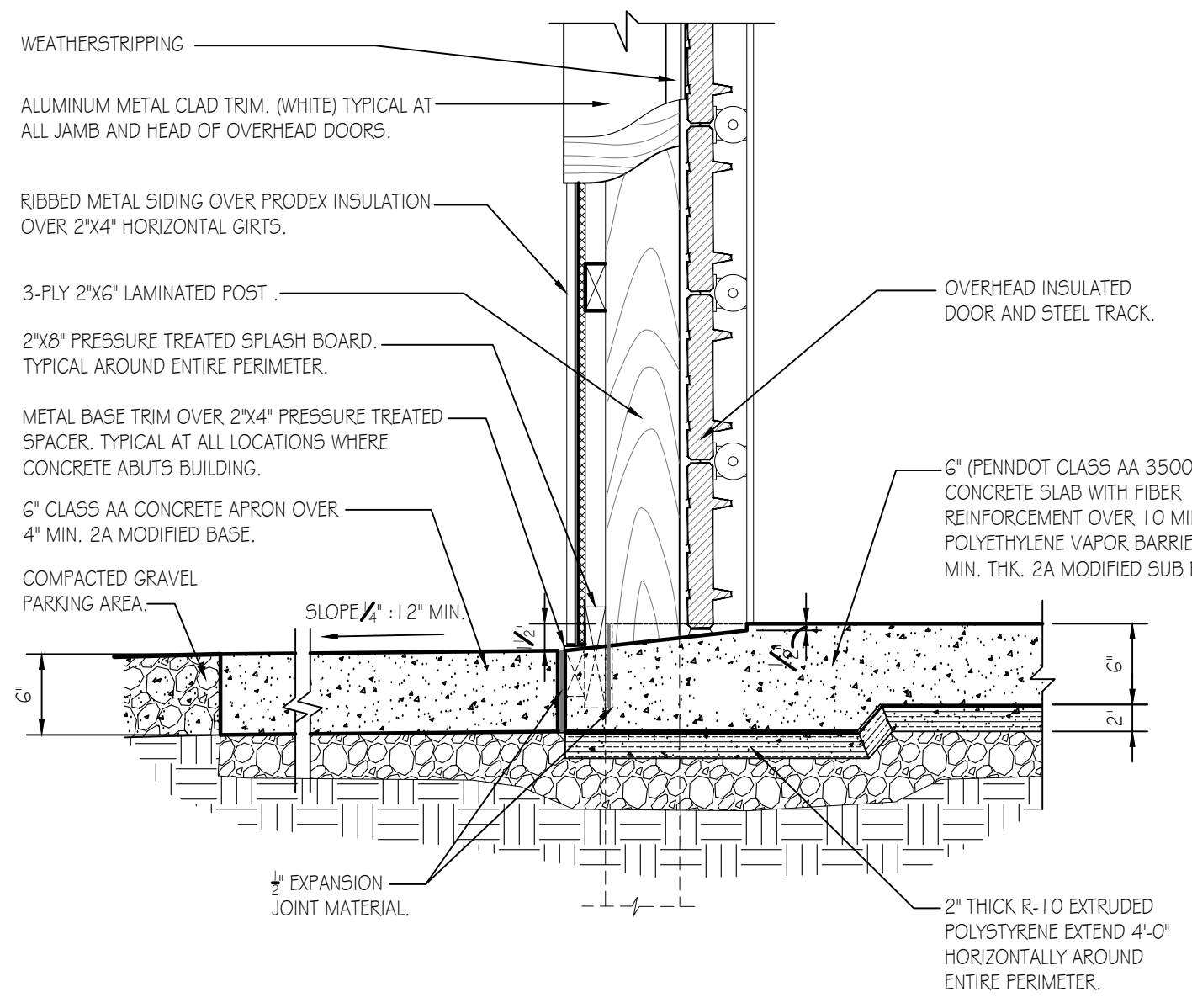
PENNSYLVANIA GAME COMMISSION		
SGL #414 -BELTZVILLE (ACOE) PROPERTY	TOWAMENSING TWP.	CARBON COUNTY
NEW 30' x 50' PGC-STORAGE BUILDING		
BUILDING PLAN & ELEVATIONS		
REVISIONS	PROJECT NO.	PGC-SGL-414-22-01
	DRAWN BY:	M. SPOTTS
	DATE:	11/27/2023
	SHEET NO.	A-1



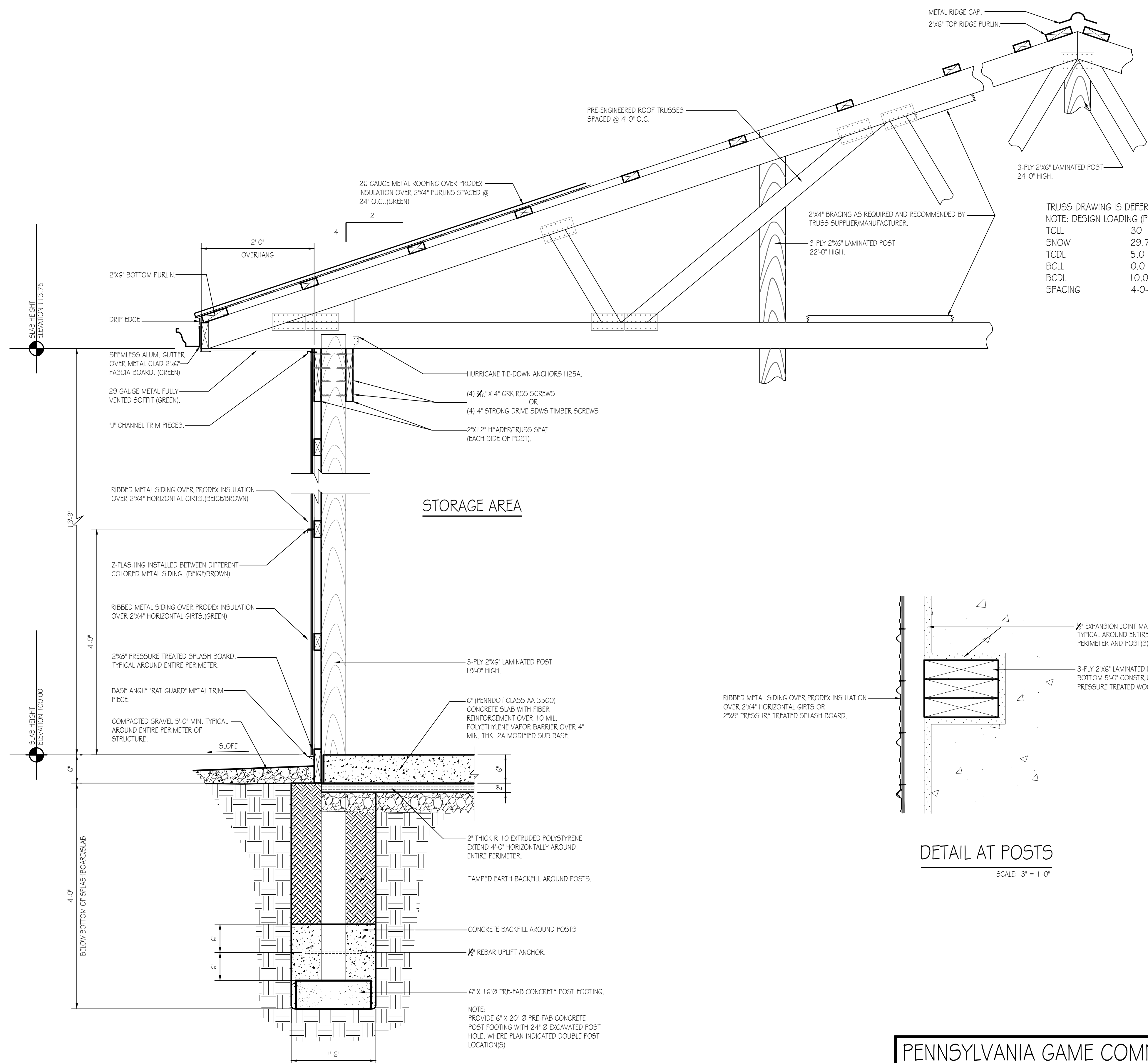
DETAIL @ CONCRETE SIDEWALK
SCALE: 1" = 1'-0"



BOLLARD DETAIL
SCALE: 1" = 1'-0"



O.H. DOOR SILL AND JAMB DETAIL
SCALE: 1" = 1'-0"
A-2



WALL SECTION DETAIL
SCALE: 1" = 1'-0"
A-2

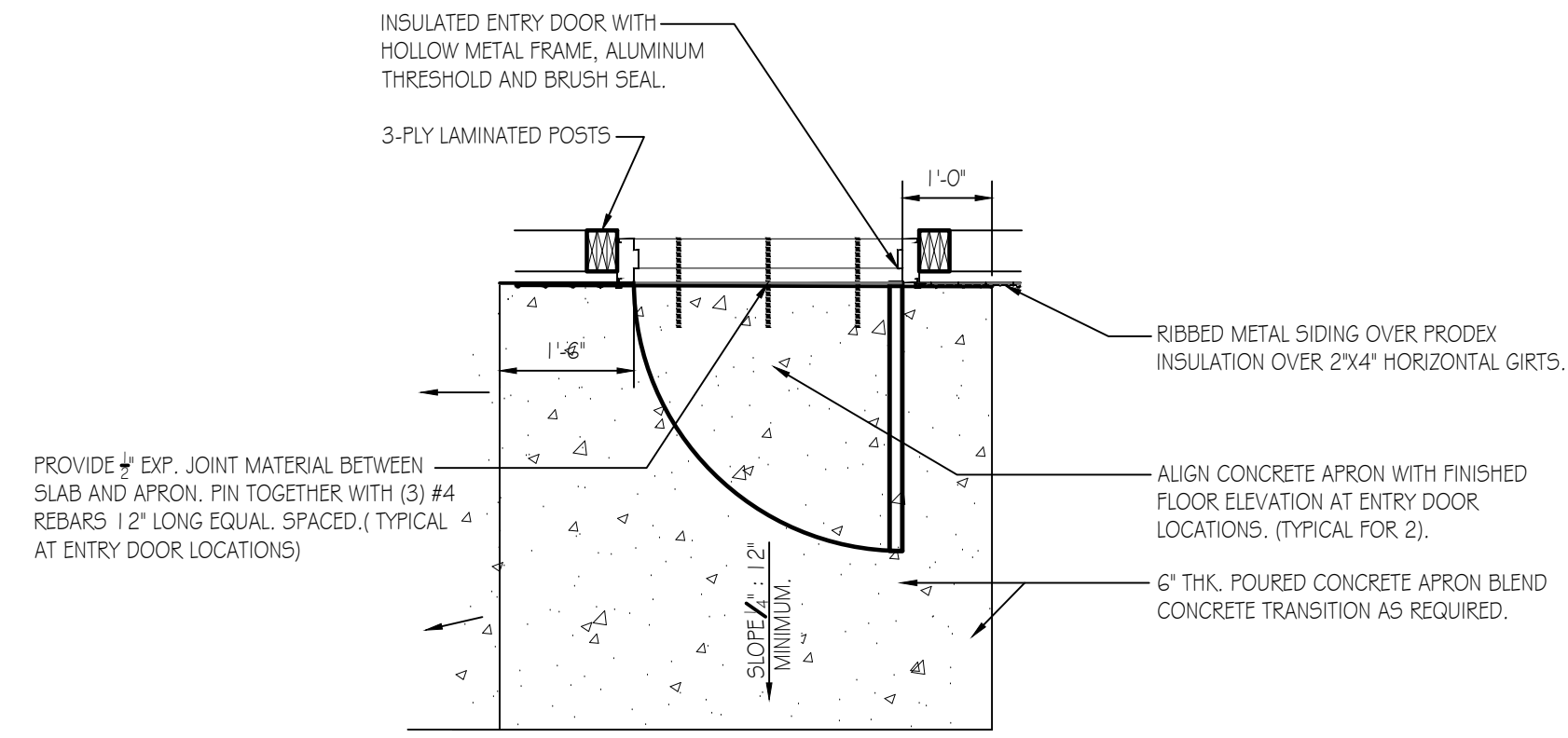
TRUSS DRAWING IS DEFERRED.
NOTE: DESIGN LOADING (PSF)

TCLL	30
SNOW	29.75/42
TCDL	5.0
BCLL	0.0
BCDL	10.0
SPACING	4-0-0

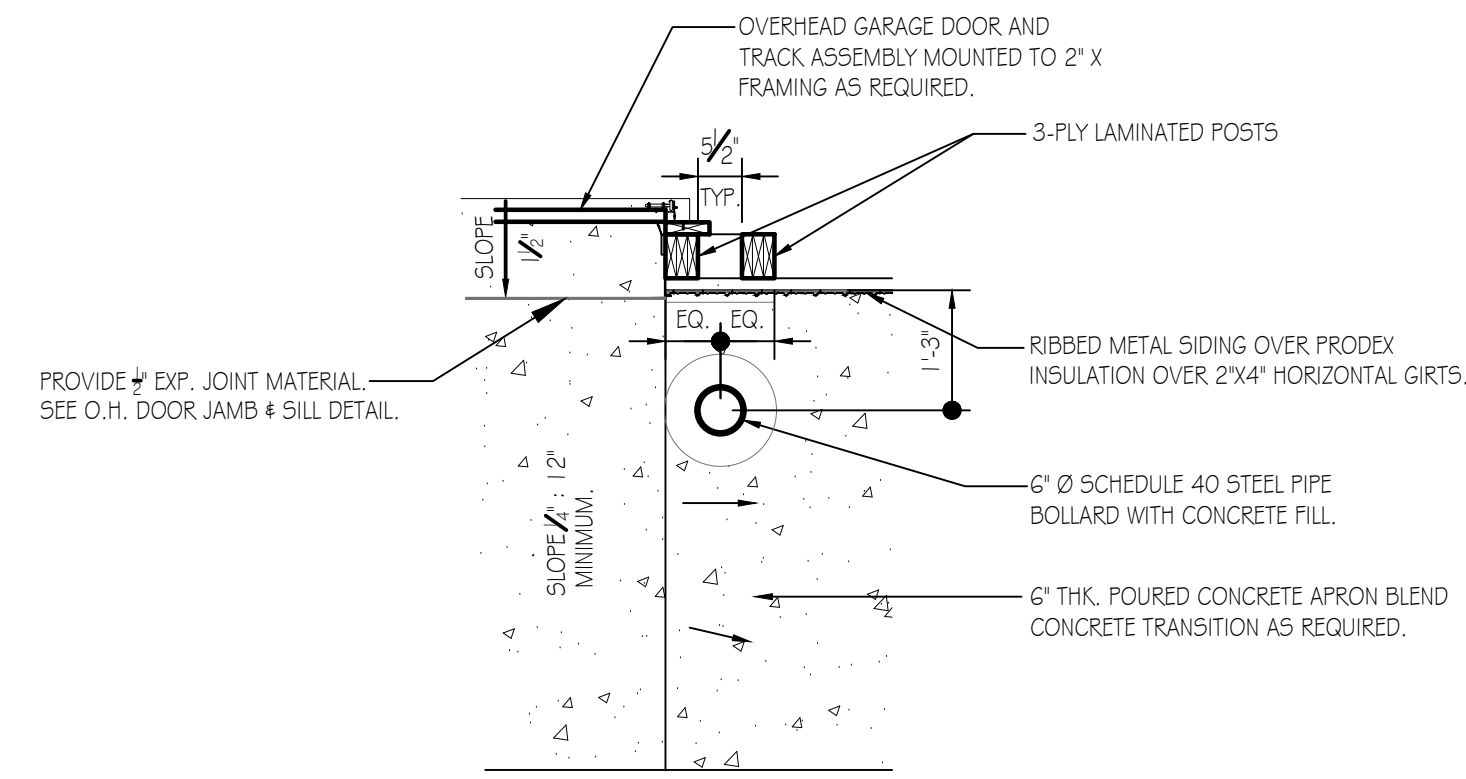
DETAIL AT POSTS
SCALE: 3" = 1'-0"



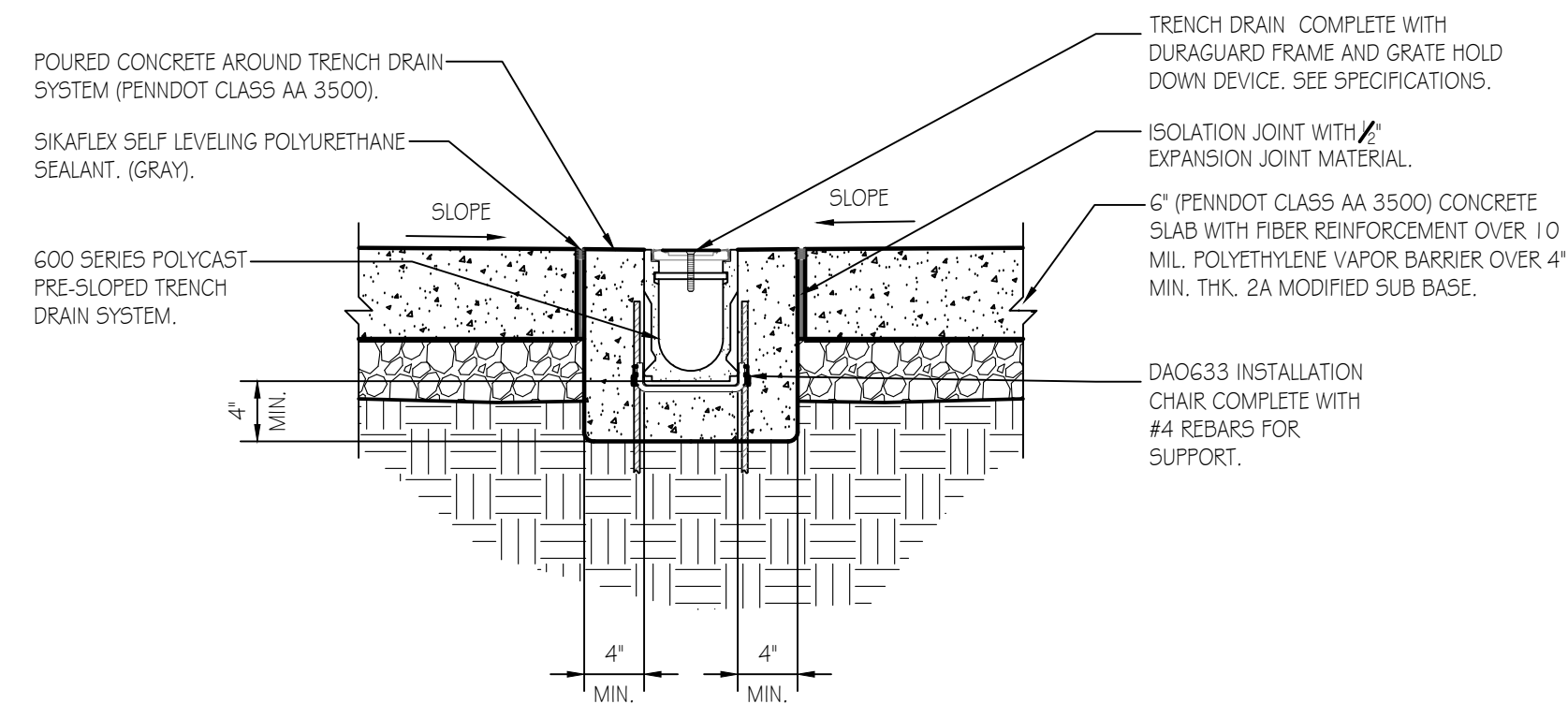
PENNSYLVANIA GAME COMMISSION		
5GL #414-BELTZVILLE (ACOE) PROPERTY TOWAMENSING TWP. CARBON COUNTY		
NEW 30' x 50' PGC-STORAGE BUILDING		
WALL SECTION & DETAILS		
REVISIONS	PROJECT NO.	PGC-SGL-414-22-01
	DRAWN BY:	M. SPOTTS
	DATE:	11/27/2023
	SHEET NO.	A-2



DETAIL AT ENTRY DOOR
SCALE: 1/2" = 1'-0"

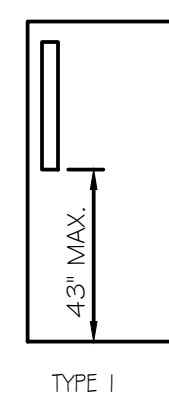


DETAIL AT OVERHEAD DOOR
SCALE: 1/2" = 1'-0"



TRENCH DRAIN DETAIL
SCALE: 1" = 1'-0"

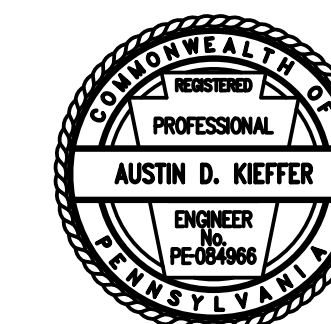
Mark	Type	W	H	T	Hand	Qty	Remarks
A	I	3'-0"	7'-0"	1-3/4"	RHR	1	INSULATED CORE, PANIC BOLT, CLOSER
B	O.H.	20'-0"	12'-0"	SEE SPECIFICATIONS		1	INSULATED SECTIONAL OVERHEAD DOOR



DOOR SCHEDULE NOTES:

- 1) ALL CORES TO BE BEST CORMAX, 7 PIN COMPATIBLE.
- 2) SEE PROJECT SPECIFICATIONS FOR DOOR FRAMES & DOOR HARDWARE REQUIRED.

DOOR SCHEDULE
N.T.S.



PENNSYLVANIA GAME COMMISSION		
SGL #414 -BELTZVILLE (ACOE) PROPERTY	TOWAMENSING TWP.	CARBON COUNTY
NEW 30' x 50' PGC-STORAGE BUILDING		
SECTIONS, DETAILS & DOOR SCHEDULE		
REVISIONS	PROJECT NO.	PGC-SGL-414-22-01
	DRAWN BY:	M. SPOTTS
	DATE:	11/27/2023
	SHEET NO.	A-3

LOAD CENTER - 200A
VOLTAGE: 240/120V
SERVICE FEEDER SIZE: 2-#4/0 # 1-#2 AL (BY PPL ELECTRIC UTILITIES, VERIFY IN FIELD)

CIRCUIT NO.	CIRCUIT BREAKERS		200 AMP Main Breaker Panel	Wire No./Size	Conduit Size
	POLES	AMPS			
1	2	50	220 VOLT WELDING OUTLET	3 - #6	1-1/4"
2	2	50	220 VOLT WELDING OUTLET	3 - #6	1-1/4"
3	1	20	STORAGE RECEPTACLES, NORTH SIDE	3 - #12	3/4"
4	1	20	STORAGE RECEPTACLES, SOUTH SIDE	3 - #12	3/4"
5	1	20	DOOR LIFT RECEPTACLES	3 - #12	3/4"
6	1	20	STORAGE LIGHTING	3 - #12	3/4"
7	1	20	SERVICE PANEL RECEPTACLES	3 - #12	3/4"
8	1	20	SERVICE PANEL RECEPTACLES	3 - #12	3/4"
9	1	20	SERVICE PANEL RECEPTACLES	3 - #12	3/4"
10-24			SPARE SPACES		

ELECTRICAL WIRING SYMBOLS

- GF-WATER RESISTANT-RECEPTACLE
- GFI RECEPTACLE
- DUPLEX OUTLET, SPLIT CIRCUIT
- DUPLEX OUTLET
- 50 AMP, 220 VOLT OUTLET, WELDER (VERIFY TYPE & LOCATION WITH PGC)
- 30 AMP, 220 VOLT OUTLET
- 30 AMP, 220 VOLT OUTLET (DRYER)
- HOME RUN CIRCUIT #
- TELECOMMUNICATIONS OUTLET
- JUNCTION BOX
- PHOTO CELL
- EXIT LIGHTING WBATTERIES
- SWITCH
- SWITCH, 3 WAY
- SWITCH, 4 WAY
- OCCUPANCY SENSOR
- PRESSURE SWITCH
- WATER PUMP

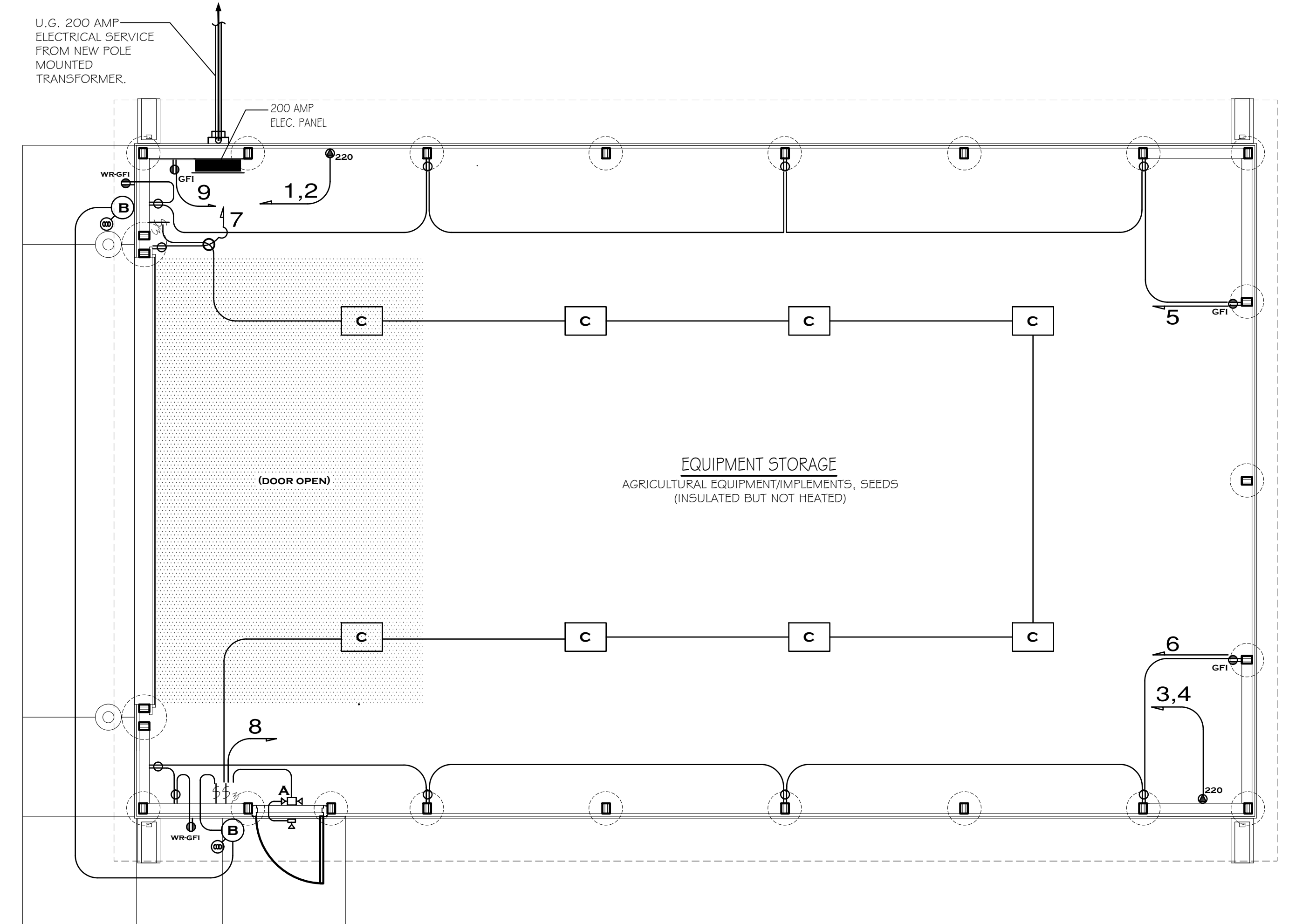
GENERAL ELECTRICAL NOTES:

- FURNISH AND INSTALL SOLID COPPER CONDUCTORS AS SPECIFIED; NO ALUMINUM AND NO STRANDED. MC CABLE IS APPROVED FOR ALL HOME RUN CIRCUITS IF NEATLY INSTALLED.
- ALL CONDUCTORS FOR 120V CIRCUITS OVER 100' IN LENGTH SHALL BE MINIMUM #10AWG. ALL CONDUCTORS FOR 120V CIRCUITS OVER 150' IN LENGTH SHALL BE MINIMUM #8AWG. CONTRACTOR IS RESPONSIBLE FOR VERIFICATION OF FINAL CIRCUIT LENGTHS AND CORRESPONDING WIRE SIZE TO ENSURE VOLTAGE DROP IS MAINTAINED WITHIN NEC LIMITS.
- ALL WORK SHALL BE PERFORMED AS REQUIRED BY APPLICABLE SECTION OF THE NATIONAL ELECTRICAL CODE (NEC), LATEST EDITION, AND ALL GOVERNING UCC BUILDING CODES AND REGULATIONS.
- PROVIDE GROUNDING AND BONDING FOR ELECTRICAL SYSTEMS. ELECTRICAL COMPONENTS, DEVICES AND ACCESSORIES SHALL BE LISTED AND LABELED AS DEFINED IN NFPA 70 AND COMPLY WITH UL 467 FOR GROUNDING AND BONDING MATERIALS AND EQUIPMENT. INSTALL INSULATED EQUIPMENT GROUNDING CONDUCTORS ALL FEEDERS AND BRANCH CIRCUITS, LIGHTING CIRCUITS, RECEPTACLE CIRCUITS SINGLE PHASE MOTOR AND APPLIANCE BRANCH CIRCUITS, ARMORED AND METAL-CLAD CABLE RUNS AND AS REQUIRED BY NFPA 70.
- PROVIDE ALL HANGERS AND SUPPORTS FOR ELECTRICAL SYSTEMS, INCLUDING STEEL SLOTTED SUPPORT SYSTEMS, CONDUIT AND CABLE SUPPORT DEVICES, SUPPORTS FOR CONDUCTORS IN VERTICAL CONDUIT. HANGERS AND SUPPORTS SHALL HAVE A FLAME RATING OF CLASS 1 AND BE SELF-EXTINGUISHING ACCORDING TO ASTM D 635.
- MOUNT COMBINATION EXIT/EMERGENCY LIGHTING UNITS TO THE LIGHTING BRANCH CIRCUIT IN THE ROOM IT IS SERVING ON THE LINE SIDE OF ANY SWITCHES.
- ALL ELECTRICAL WIRE RUNS BELOW THE TRUSS LINE EXTENDING VERTICAL AND HORIZONTAL ARE TO BE INSTALLED IN EMT CONDUIT OR SCHEDULE 40 PVC CONDUIT. DIAMETER TO CORRESPOND WITH WIRING SIZE. ALL REMAINING ELECTRICAL WIRE RUNS IN AND ATTACHED TO THE TRUSS TO BE EXPOSED MC CABLE.

LIGHTING FIXTURE SCHEDULE

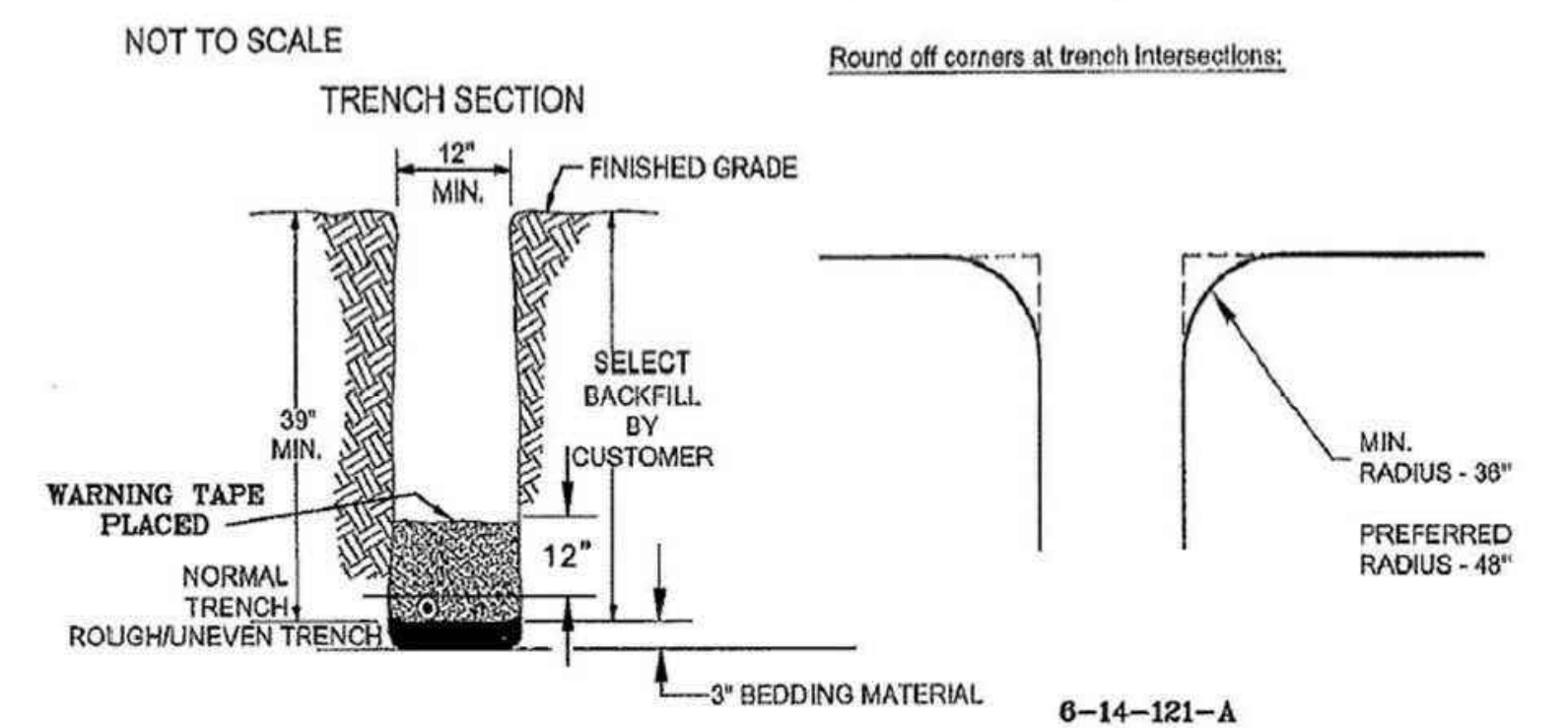
MARK	QTY	LIGHTING FIXTURE	MODEL
A	1	EXIT & EMERGENCY COMBO LIGHT W/ BATTERIES & REMOTE HEAD.	LITHONIA ECRLEDP0 M6 wELA LED WP M1.2
B	2	SECURITY PHOTOCELL, WALL MOUNT/OUTSIDE UNIT 1.6 WATT LED	LITHONIA TWS LED P1 50K MV/VOLT PE DDB M4
C	8	15.25' X 22" 4 LAMP LED HIGH BAY	LITHONIA IBH 15000LM S0080 MD OZ1 O 40K 80 CRI

LIGHTING FIXTURE SCHEDULE NOTES:
1. RECEPTACLES AND SWITCH MOUNTING HEIGHTS - 48" A.F.F.

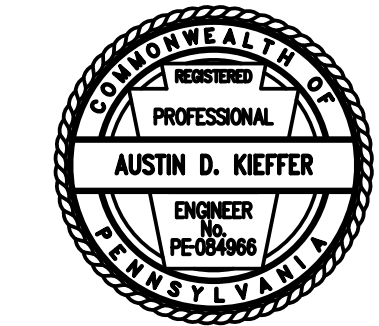
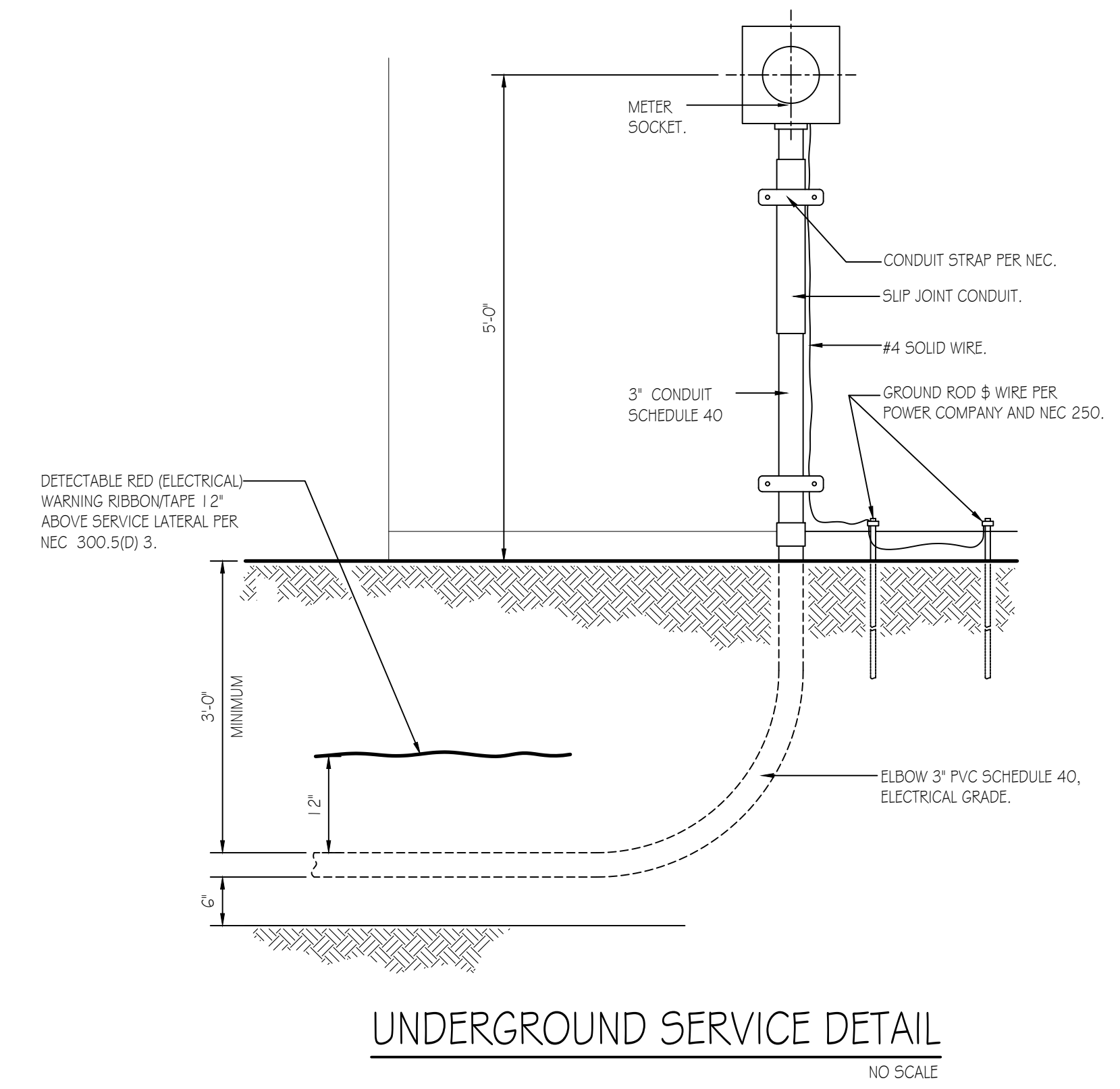


NEW STORAGE BUILDING FLOOR PLAN - ELECTRICAL PLAN
SCALE: 1/4" = 1'-0"
TRUE NORTH PROJECT NORTH

6-14-121 - Customer Reference Specification, Trenching & Backfilling By Customer/Non-Joint Trench



- Notes:**
- Customer must coordinate with communication companies as to backfill and separation required for their cables.
 - All trenches must be built to meet approved protection for the job being performed per OSHA 29CFR1926.652.
 - Depth/Seperation Requirements for Utility Trenching**
 - A. Water, sewer, etc. - 12 inches of earth.
 - B. Steam, heat mains - 72 inches of earth.
 - C. Propane - 36 inches of earth; never above electric.
 - D. Gas - 6 inches minimum; 12 inches preferred; not below electric without prior approval from both PPL
 - E. EU and the appropriate gas utility.
 - F. Communication - 6 inches minimum, 12 inches preferred.



PENNSYLVANIA GAME COMMISSION
SGL #414-BELTZVILLE (ACOE) PROPERTY | TOWAMENSING TWP. | CARBON COUNTY
NEW 30' x 50' PGC-STORAGE BUILDING
ELECTRICAL FLOOR PLAN, SCHEDULES & DETAILS

REVISIONS	PROJECT NO. PGC-SGL-414-22-01
	DRAWN BY: M. SPOTTS
	DATE: 11/27/2023
	SHEET NO. E-1